



Location Finders International, Inc.
 9440 Enterprise Dr, Mokena, IL 60448
 (708) 390-1629

301-335 S Farrell Rd
 Lockport, IL

RETAIL PADS AVAILABLE

4.20 AC

MARKET SUMMARY

- Across from Walmart Supercenter and Jewel-Osco
- 1/4 mile from I-355 interchange (68K VPD)
- 1.5 miles north of planned home development
- 5.5 MSF of industrial parks along I-355
- One mile north of Lockport High School (over 3,000 students)
- Area retailers include: Aldi, Walgreens, Panera Bread, McDonalds, Starbucks, Version, Chase

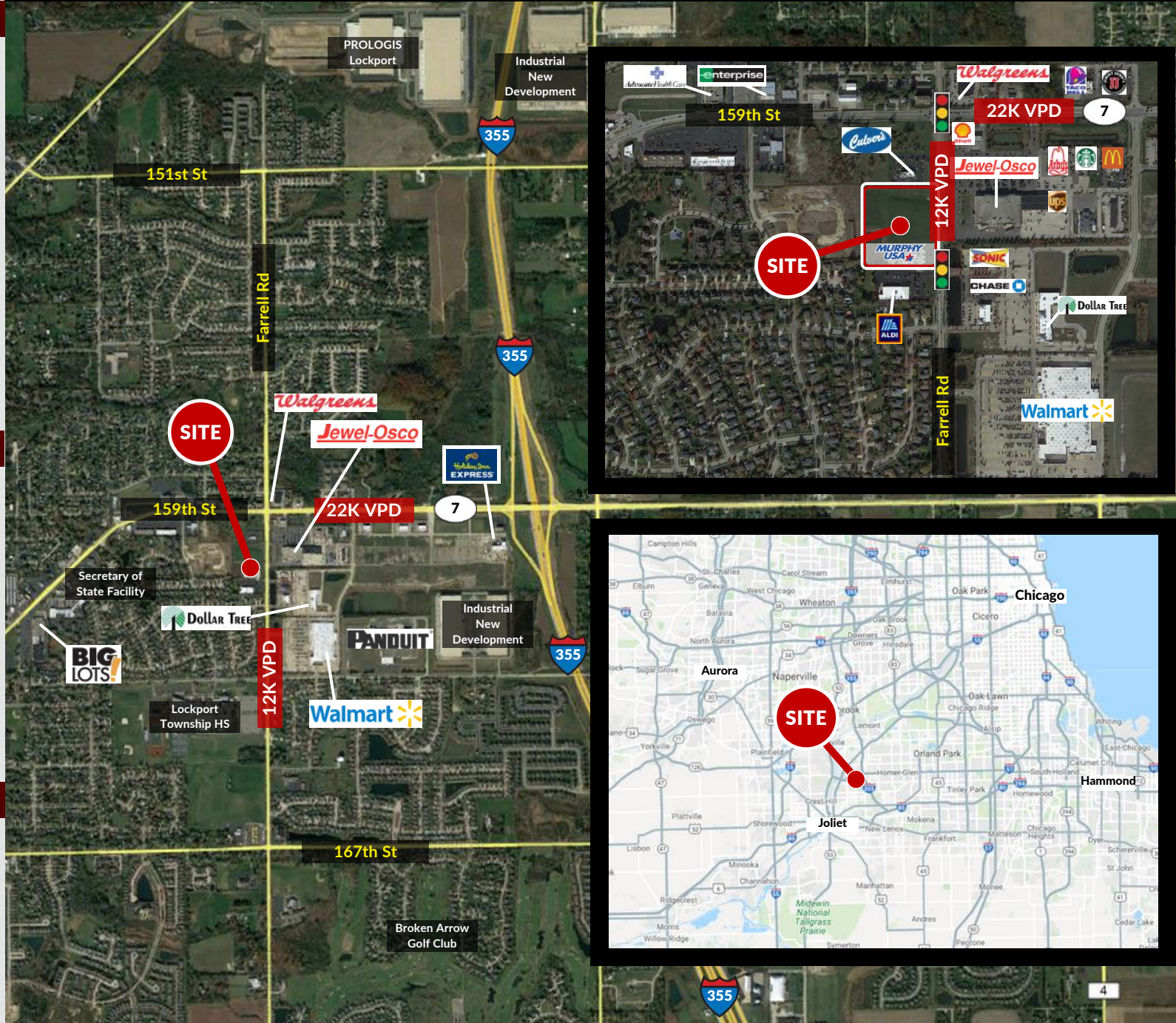
DEMOGRAPHICS

POPULATION	1 Mile	8,667
	3 Mile	34,670
	5 Mile	103,542
# HOUSEHOLDS	1 Mile	2,941
	3 Mile	12,344
	5 Mile	33,341
AVG HH INCOME	1 Mile	\$113,331
	3 Mile	\$107,583
	5 Mile	\$100,188

CONTACT

ALAN ERICKSON
 aerickson@lfirealestate.com
 (708) 390-1629

DIANE MENZA
 dmenza@lfirealestate.com
 (708) 390-1622



RETAIL PADS AVAILABLE

4.20 AC

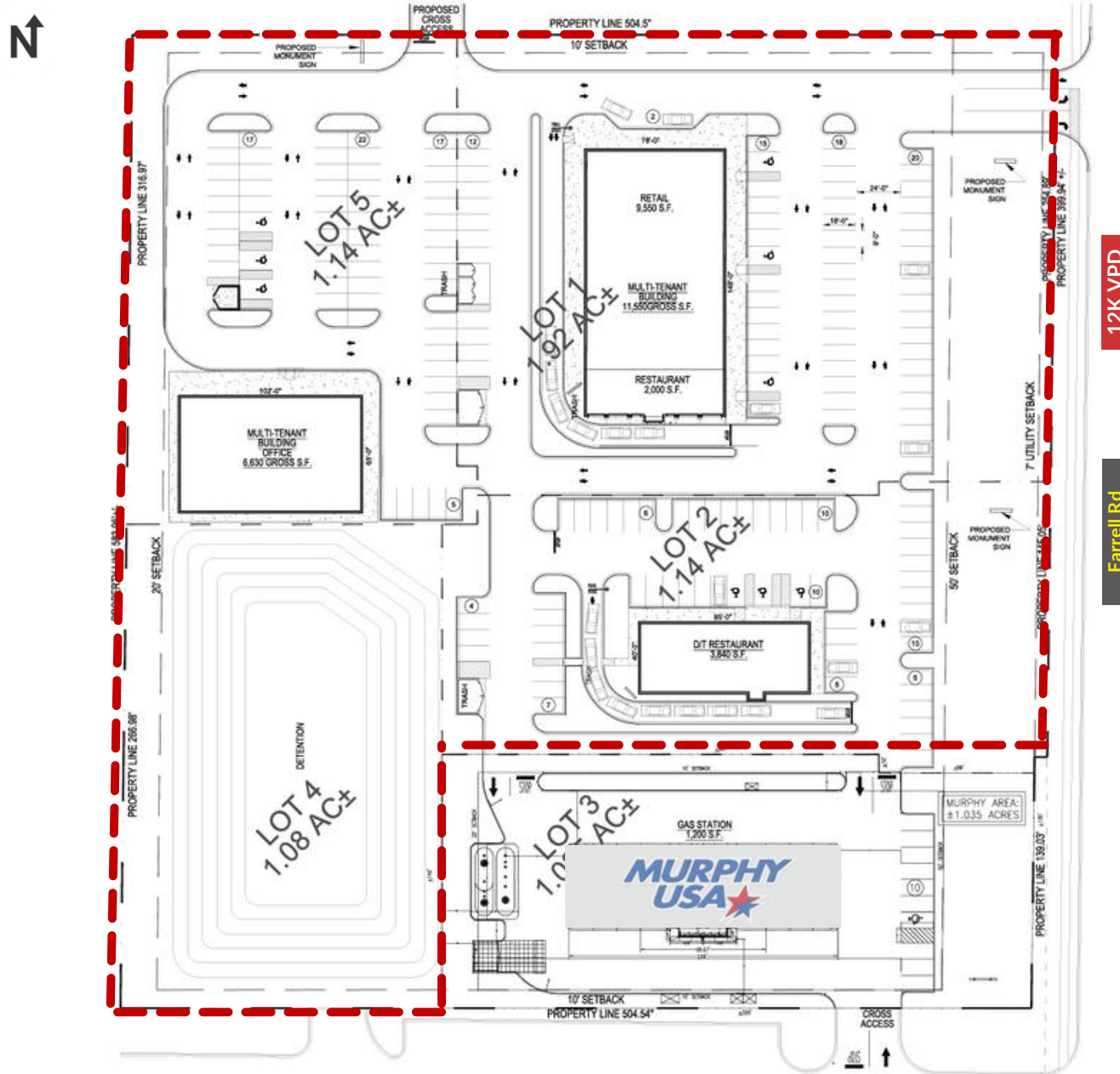
SITE SUMMARY

- Land Size: 6.3 AC
- Available: 4.2 AC
- Access: Full access off Farrell Rd
- Cross access with Aldi and their shared signal with Walmart
- Zoning: C2
- Signage: Along Farrell Rd
- Proposed multi-tenant w/drive-thru, QSR with drive-thru

CONTACT

ALAN ERICKSON
 aerickson@lfirealestate.com
 (708) 390-1629

DIANE MENZA
 dmenza@lfirealestate.com
 (708) 390-1622



12K VPD

Farrell Rd

This information contained is obtained from sources we deem reliable. We have no reason to doubt its accuracy but do not guarantee it.