



Location Finders International, Inc.  
9440 Enterprise Dr, Mokena, IL 60448  
(708) 390-1629

1749 S. Randall Rd.  
Geneva, IL

## RETAIL SPACE AVAILABLE

2,300 SF

### MARKET SUMMARY

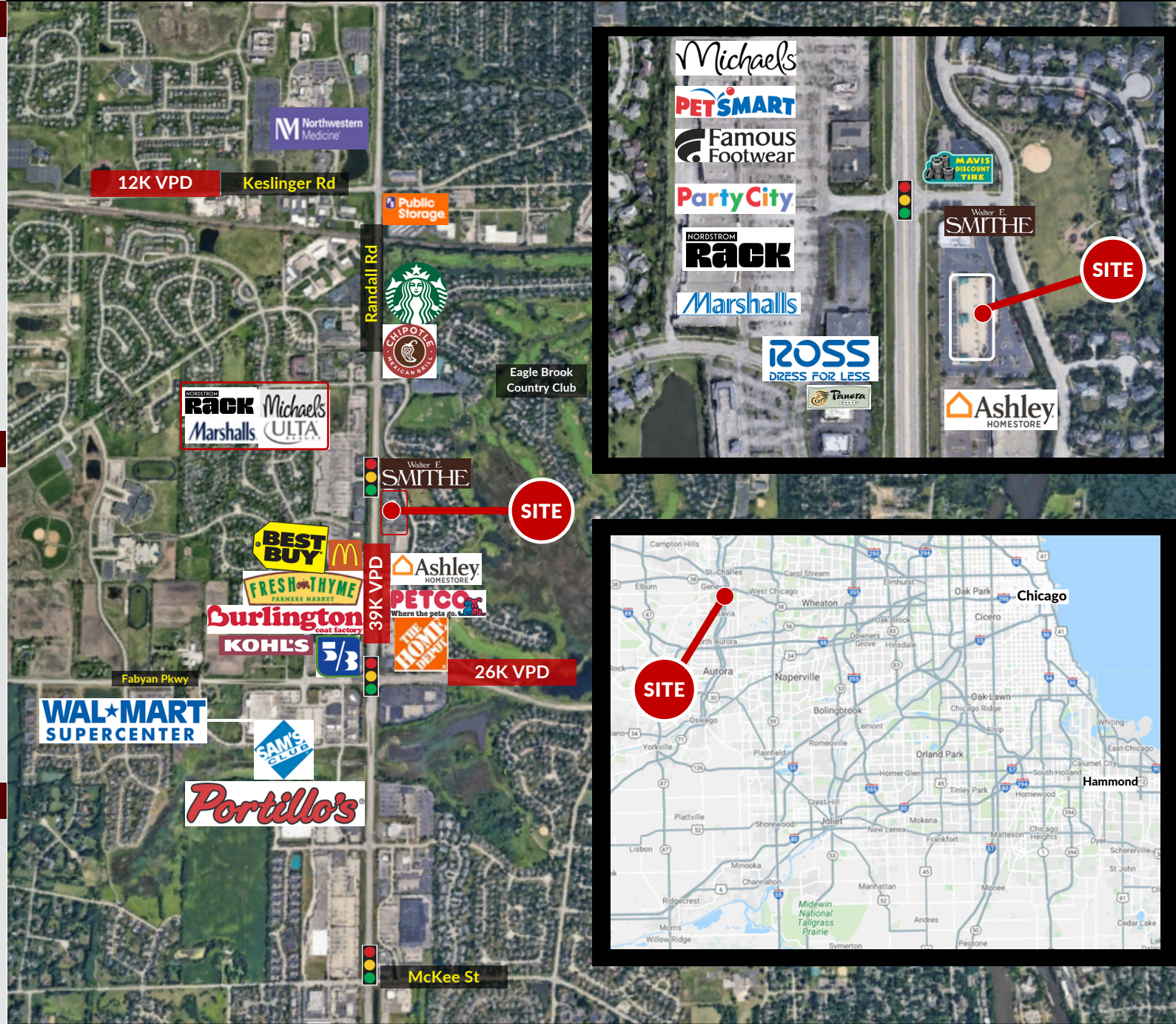
- One of top retail corridors in Chicago MSA
- One mile south of Northwestern Hospital with 170+ beds
- Over 75,000 employees within 5-miles of site
- Area retailers include: Walmart, Kohls, Menards, Ulta, Bed Bath & Beyond, Trader Joe's, Best Buy, Fresh Thyme

### DEMOGRAPHICS

POPULATION	1 Mile	6,492
	3 Mile	56,091
	5 Mile	111,507
# HOUSEHOLDS	1 Mile	2,141
	3 Mile	20,426
	5 Mile	39,812
AVG HH INCOME	1 Mile	\$172,358
	3 Mile	\$132,593
	5 Mile	\$132,482

### CONTACT

ALAN ERICKSON  
aerickson@lfirealestate.com  
(708) 390-1629







Location Finders International, Inc.  
9440 Enterprise Dr, Mokena, IL 60448  
(708) 390-1629

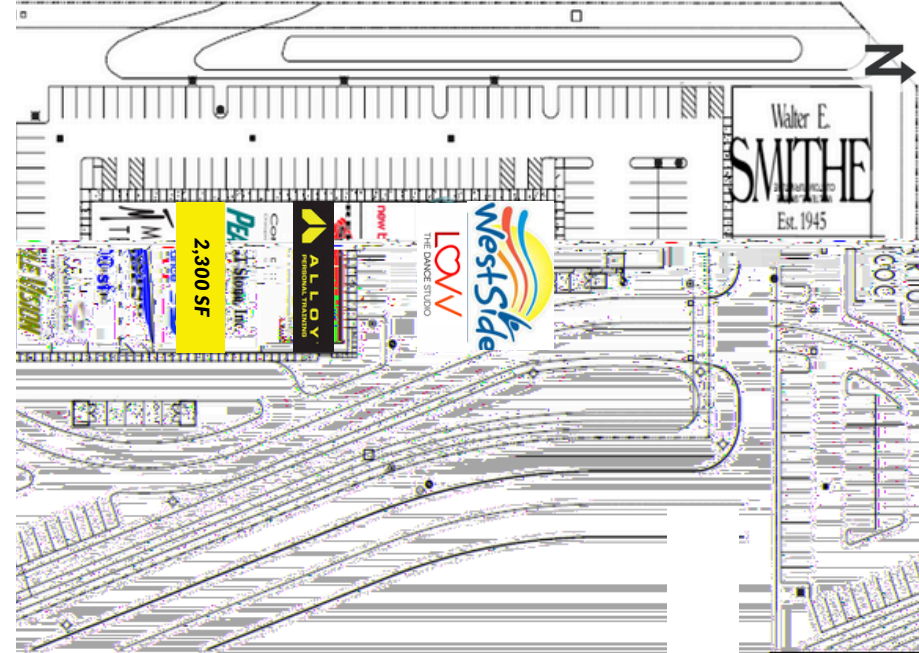
1749 S. Randall Road  
Geneva, IL

## RETAIL SPACE AVAILABLE

2,300 SF

### SITE SUMMARY

- **Land Size:** 4.44 AC
- **Center GLA:** 36,267 sf
- **Co-Tenancy:** Walter E Smithe, Mario Tricoci, New Balance, Red Wing, Core Wellness, Pearle Vision
- **Available:** 2,300 SF last remaining inline space
- **Zoning:** B-5
- **Parking:** +/- 165 parking spaces
- **Access:** Signalized intersection with access off Randall Road & Christina Lane
- **Signage:** Monument sign on Randall Road



### CONTACT

ALAN ERICKSON  
aerickson@lfirealestate.com  
(708) 390-1629